

# TWISTED TALES

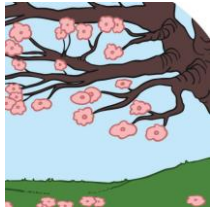




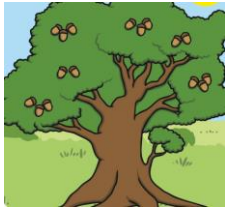
# KNOWLEDGE ORGANISER

## TWISTED TALES

We have four seasons:



Spring:



Summer:



Autumn:



Winter:

A weather presenter lets people know what the weather might do that day.

Sara Blizzard presents the weather for where we live.



### Healthy Eating

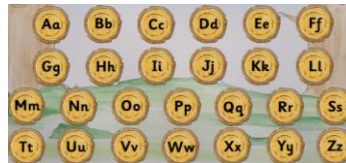
We need a healthy mixture of protein, grains, vegetables, fruit and dairy in our diet.

We can make treats like biscuits healthier by adding fruit like raisins.



### Typing on the Chromebook

The keyboard is in capital letters. Remember to add a space in between your words by pressing the space bar.



### Human and Physical Features

Physical: nature made

Human: human made



Physical features of Derby include:

Trees, hills, River Dove

Human features of Derby include:

Pride Park, houses, pavements.

### Christian Easter Story



Jesus walked on palm leaves.



Jesus had a supper with his friends.



Jesus died on a cross. People were sad.



Jesus had risen from the dead.