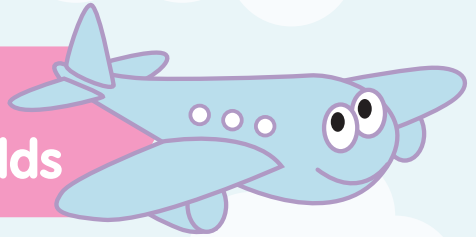




# The Families Information Service

**Flying start funded  
childcare for 2 year olds**



**Helping children to succeed with their development  
and learning to reach their next steps**



## You can claim a funded place for your child if you meet one or more of the following...

- Income Support
- income-based Jobseeker's Allowance (JSA)
- income-related Employment and Support Allowance (ESA)
- Universal Credit, and your household income is £15,400 a year or less after tax, not including benefit payments
- Child tax credits or Working tax credits (but not both) and you have an income of £16,190 or less a year, before tax
- the guaranteed element of Pension Credit
- the Working Tax Credit 4-week run on (the payment you get when you stop qualifying for Working Tax Credit)

Or your two year old:

- is looked after by a local authority
- has a statement of special education needs (SEN) or an education, health and care (EHC) plan
- gets Disability Living Allowance
- has left care under an adoption order, special guardianship order or a child arrangements order

If you're a non-UK citizen who cannot claim benefits:

If your immigration status says you have 'no recourse to public funds', you may still get free childcare for your 2-year-old. You must live in England and your household income must be no more than:

- £26,500 for families outside of London with one child
- £30,600 for families outside of London with two or more children
- You cannot have more than £16,000 in savings or investments.

**Please note:** Your Flying Start funded place is fully funded however providers can ask you for a voluntary contribution towards consumables such as meals and snacks. If these contributions are a barrier to you accessing a place speak to your childcare provider as they must offer you alternatives such as you providing a packed lunch.

## When is my child entitled to a funded place?

If you are eligible for a funded two year old place then you can claim this the term after your child turns two and this finishes at the end of the term in which your child turns three. Three year olds can then claim their three and four year old 15 hours of early education. You can use the table below, to work out when your child's funded 2 year old place will start and end.

My child was born between	They are eligible for a funded place from:	Their funded place ends
1st January and 31st March.	1st April following their second birthday.	At the end of the spring school term as your child turns three.
1st April and 31st August.	1st September following their second birthday.	At the end of the summer school term as your child turns three.
1st September and 31st December.	1st January following their second birthday.	At the end of the autumn school term as your child turns three.

## How do I know my child will be well looked after?

The funded places are only available from childcare providers who have been assessed by Ofsted as delivering high quality care for two year olds. You can find a local provider by visiting our online childcare directory: [www.derby.gov.uk/childcairedirectory](http://www.derby.gov.uk/childcairedirectory)



## How do I get a funded place?

1. Complete the simple online form at: [www.derby.gov.uk/2yearchildcare](http://www.derby.gov.uk/2yearchildcare) or phone the Families Information Service on 01332 640758.
2. If you are eligible, we will email you a code to take to your provider.
3. Contact your preferred provider and arrange to visit. Check if they have a place at the times you need.
4. Please show the code to your chosen childcare provider. They will let us know that you have taken the place for your child.
5. Once you have secured a place, your childcare provider will ask you to sign a parental contract to claim the funding and ask to see your child's birth certificate or passport and a utility bill showing your current home address.



If you can not find a suitable childcare provider or need further support contact the Families Information Service who will be able to help you:

**Telephone:** 01332 640758  
**Signing Service:** [derby.gov.uk/signing-service](http://derby.gov.uk/signing-service)  
**Email:** [fis@derby.gov.uk](mailto:fis@derby.gov.uk)

We can give you this information in any other way, style or language that will help you access it. Please contact us on **01332 640758** or **[derby.gov.uk/signing-service](http://derby.gov.uk/signing-service)**

### **Punjabi**

ਇਹ ਜਾਣਕਾਰੀ ਅਸੀਂ ਤੁਹਾਨੂੰ ਕਿਸੇ ਵੀ ਹੋਰ ਤਰੀਕੇ ਨਾਲ, ਕਿਸੇ ਵੀ ਹੋਰ ਰੂਪ ਜਾਂ ਬੋਲੀ ਵਿੱਚ ਦੇ ਸਕਦੇ ਹਾਂ, ਜਿਹੜੀ ਇਸ ਤੱਕ ਪਹੁੰਚ ਕਰਨ ਵਿੱਚ ਤੁਹਾਡੀ ਸਹਾਇਤਾ ਕਰ ਸਕਦੀ ਹੋਵੇ। ਕਿਰਪਾ ਕਰਕੇ ਸਾਡੇ ਨਾਲ ਇੱਥੇ ਸੰਪਰਕ ਕਰੋ: **01332 640758** ਜਾਂ **[derby.gov.uk/signing-service](http://derby.gov.uk/signing-service)**

### **Polish**

Aby ułatwić Państwu dostęp do tych informacji, możemy je Państwu przekazać w innym formacie, stylu lub języku. Prosimy o kontakt: **01332 640758** lub **[derby.gov.uk/signing-service](http://derby.gov.uk/signing-service)**

### **Slovak**

Túto informáciu vám môžeme poskytnúť iným spôsobom, štýlom alebo v inom jazyku, ktorý vám pomôže k jej sprístupneniu. Prosím, kontaktujte nás na tel. č.: **01332 640758** alebo na stránke **[derby.gov.uk/signing-service](http://derby.gov.uk/signing-service)**

### **Urdu**

یہ معلومات ہم آپ کو کسی دیگر ایسے طریقے ، انداز اور زبان میں مہیا کر سکتے ہیں جو اس تک رسائی میں آپ کی مدد کرے۔ براہ کرم **01332 640758** یا **[derby.gov.uk/signing-service](http://derby.gov.uk/signing-service)** پر ہم سے رابطہ کریں

